

## AntMiner FAQ

### Q: How to reset antMiner to the default state?

A: S2 is the reset button in the second version of control board, but there is no reset button in the first version of control board. If AntMiner has to be reset, please follow these steps.

Step 1: Set your PC's IP address as 192.168.2.x or 192.168.1.x, and then connect AntMiner with your PC via a network cable.

Step2: Power on AntMiner for a while when it is in the normal state. The WAN LED should be light.

Step3: For the second version of control board, please press button S2 for more than 3 seconds. For the first version of control board, please short the RESET PIN to 3.3V as the following picture for more than 3 seconds.

Step4: Re-power antMiner. Ping 192.168.2.99 or 192.168.1.99. Note: from the version 20131212 of openwrt, the default IP is 192.168.1.99

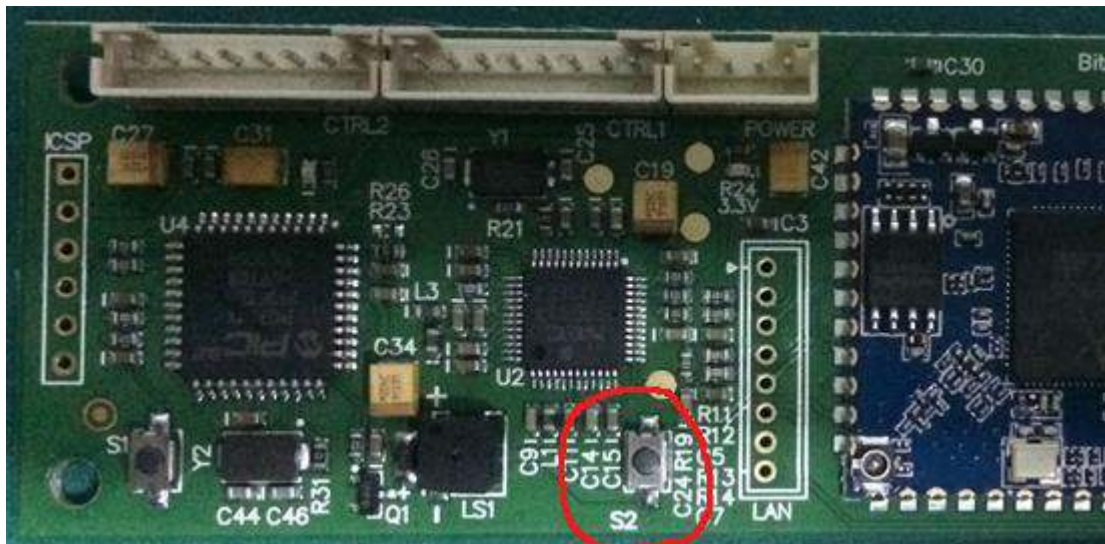
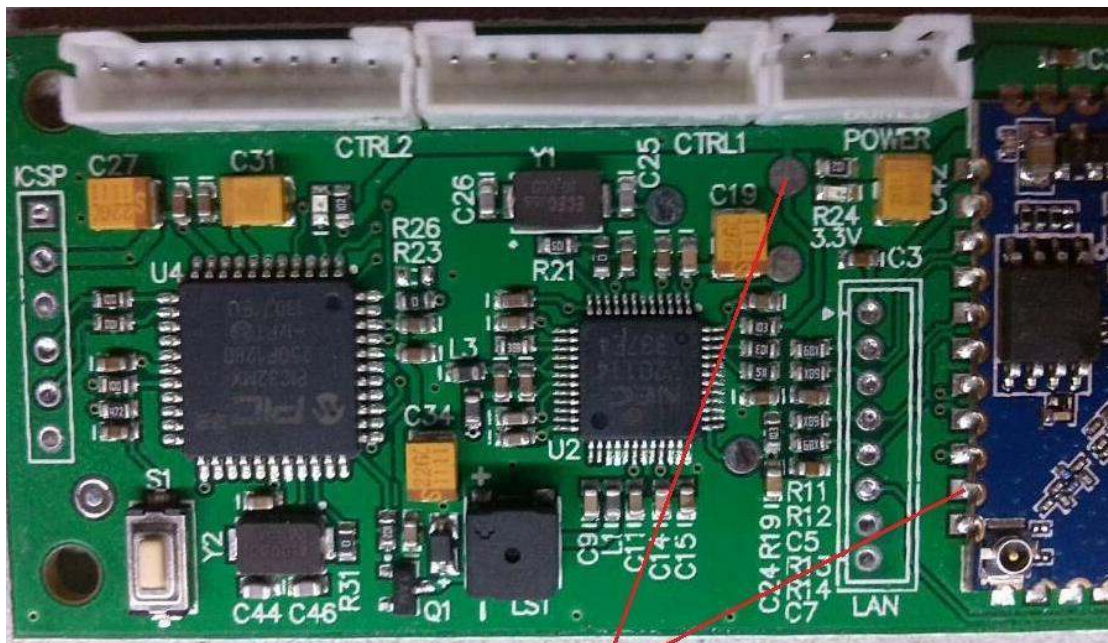


Figure 1 Second batch of control board

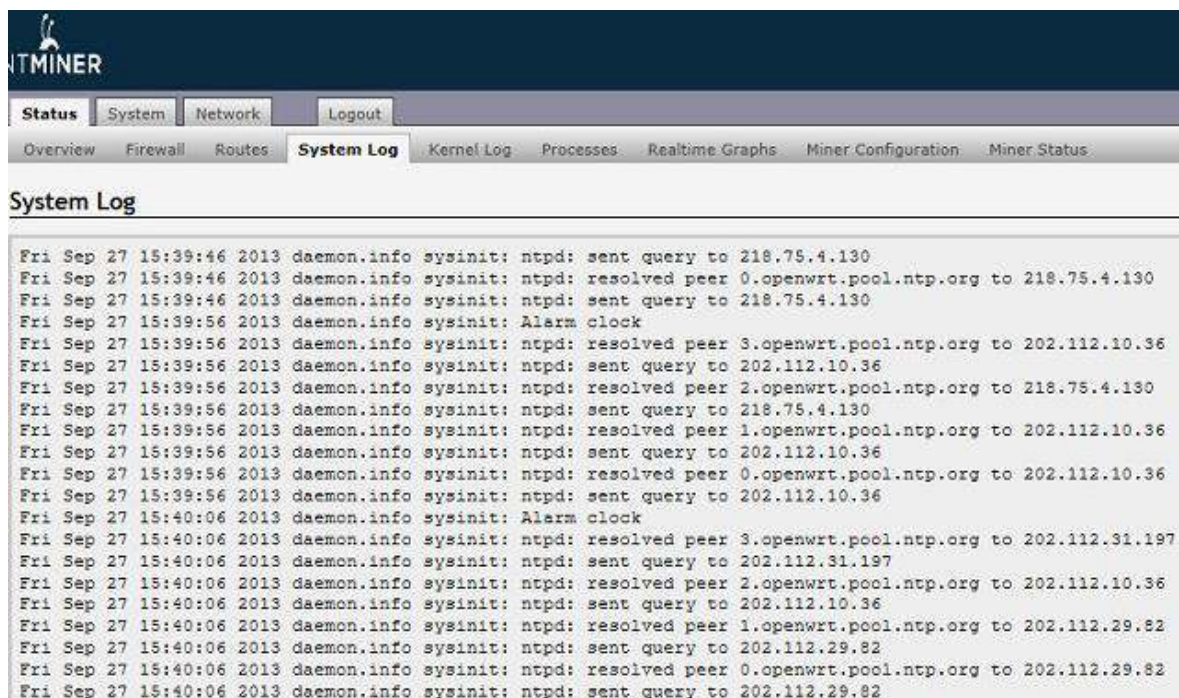


**Please short these two points**

Figure 2 First batch of control board

### Q: How to fix Network Time Protocol daemon (NTPD) Error?

Error: In some special network environment, NTPD server can't be accessed and it is failed to start cgminer. More information can be found at "Status -> System Log" tab.



```

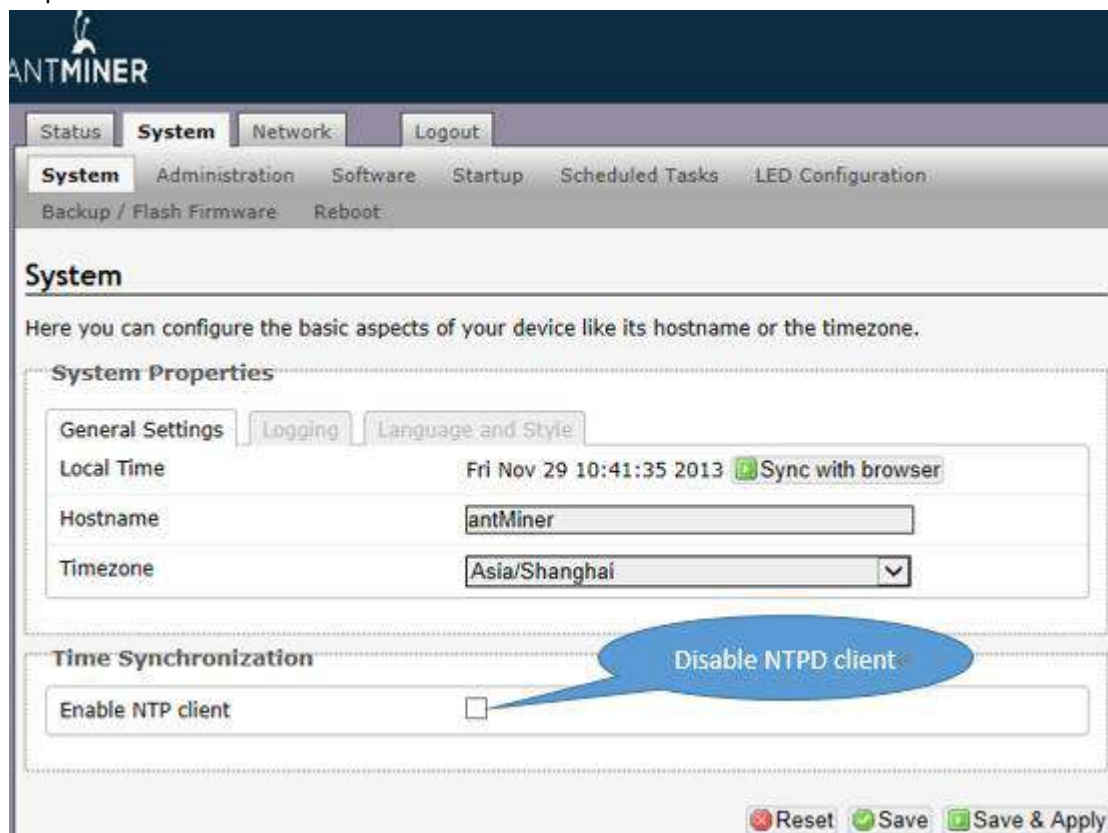
Fri Sep 27 15:39:46 2013 daemon.info sysinit: ntpd: sent query to 218.75.4.130
Fri Sep 27 15:39:46 2013 daemon.info sysinit: ntpd: resolved peer 0.openwrt.pool.ntp.org to 218.75.4.130
Fri Sep 27 15:39:46 2013 daemon.info sysinit: ntpd: sent query to 218.75.4.130
Fri Sep 27 15:39:56 2013 daemon.info sysinit: Alarm clock
Fri Sep 27 15:39:56 2013 daemon.info sysinit: ntpd: resolved peer 3.openwrt.pool.ntp.org to 202.112.10.36
Fri Sep 27 15:39:56 2013 daemon.info sysinit: ntpd: sent query to 202.112.10.36
Fri Sep 27 15:39:56 2013 daemon.info sysinit: ntpd: resolved peer 2.openwrt.pool.ntp.org to 218.75.4.130
Fri Sep 27 15:39:56 2013 daemon.info sysinit: ntpd: sent query to 218.75.4.130
Fri Sep 27 15:39:56 2013 daemon.info sysinit: ntpd: resolved peer 1.openwrt.pool.ntp.org to 202.112.10.36
Fri Sep 27 15:39:56 2013 daemon.info sysinit: ntpd: sent query to 202.112.10.36
Fri Sep 27 15:39:56 2013 daemon.info sysinit: ntpd: resolved peer 0.openwrt.pool.ntp.org to 202.112.10.36
Fri Sep 27 15:39:56 2013 daemon.info sysinit: ntpd: sent query to 202.112.10.36
Fri Sep 27 15:40:06 2013 daemon.info sysinit: Alarm clock
Fri Sep 27 15:40:06 2013 daemon.info sysinit: ntpd: resolved peer 3.openwrt.pool.ntp.org to 202.112.31.197
Fri Sep 27 15:40:06 2013 daemon.info sysinit: ntpd: sent query to 202.112.31.197
Fri Sep 27 15:40:06 2013 daemon.info sysinit: ntpd: resolved peer 2.openwrt.pool.ntp.org to 202.112.10.36
Fri Sep 27 15:40:06 2013 daemon.info sysinit: ntpd: sent query to 202.112.10.36
Fri Sep 27 15:40:06 2013 daemon.info sysinit: ntpd: resolved peer 1.openwrt.pool.ntp.org to 202.112.29.82
Fri Sep 27 15:40:06 2013 daemon.info sysinit: ntpd: sent query to 202.112.29.82
Fri Sep 27 15:40:06 2013 daemon.info sysinit: ntpd: resolved peer 0.openwrt.pool.ntp.org to 202.112.29.82
Fri Sep 27 15:40:06 2013 daemon.info sysinit: ntpd: sent query to 202.112.29.82
  
```

A:

Step1: Modify /etc/init.d/cgminer as following to disable the NTPD detect for cgminer

```
# if [ ! -f /tmp/cgminer-ntpd-done ]; then
#     while [ "$NTPD_RET" != "0" ]; do
#         ntpd -d -n -q -N \
#             -p 0.openwrt.pool.ntp.org \
#             -p 1.openwrt.pool.ntp.org \
#             -p 2.openwrt.pool.ntp.org \
#             -p 3.openwrt.pool.ntp.org
#
#         NTPD_RET=$?
#     done
#     touch /tmp/cgminer-ntpd-done
# fi
echo $PARAMS
```

Step2: Disable NTPD client for linux.



Step3: Re-power AntMiner.

**Q: How to change the clock frequency of AntMiner?**

Frequency (MHz)	ASIC hash rate (GHz)	ASIC Hex Value	Timeout for 32-chip chain (ms)
150	1.2	0581	94
175	1.4	0681	80
200	1.6	0781	70
225	1.8	0881	63
250	2.0	0981	56

---

275	2.2	0A81	51
300	2.4	0B81	47
325	2.6	4C81	43
350	2.8	4D81	40
375	3.0	4E81	38
400	3.2	4F81	35
425	3.4	5081	33
450	3.6	5181	31
475	3.8	5281	30
500	4.0	5381	28